

TP16

An economical option that offers great value for money. Suitable for various types of houses, utility, and industrial buildings. Equipped with a water lock for extra protection against water infiltration at the side overlap. Designed for roofs with slopes as low as 14 degrees.

Material: Hot-dip galvanized painted steel sheet (or painted aluminum*)

Thickness: 0.50 – 0.60 mm (0.50 mm*)

Weight: 4.35 – 5.23 kg/m² (1.51 kg/m²*)

Effective Width: 1,100 mm

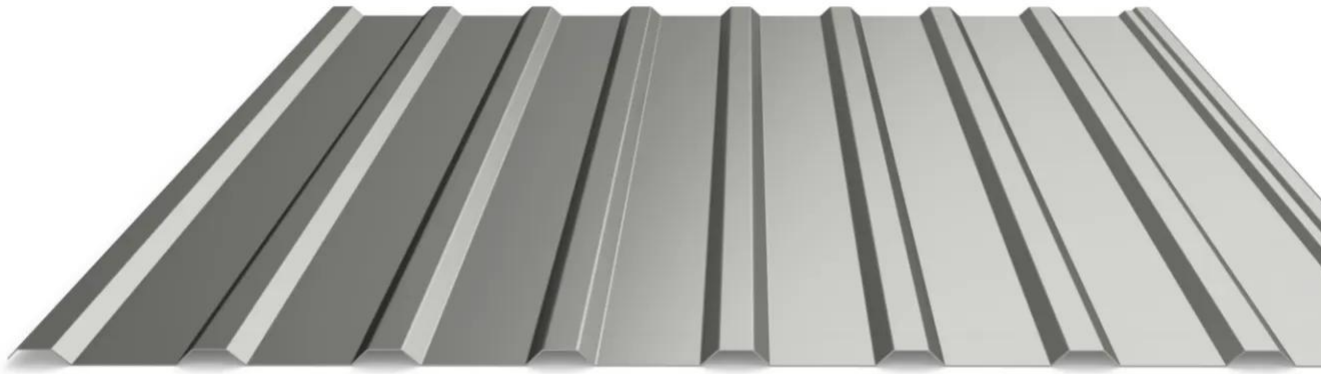
Length: 800 – 6,500 mm (S)

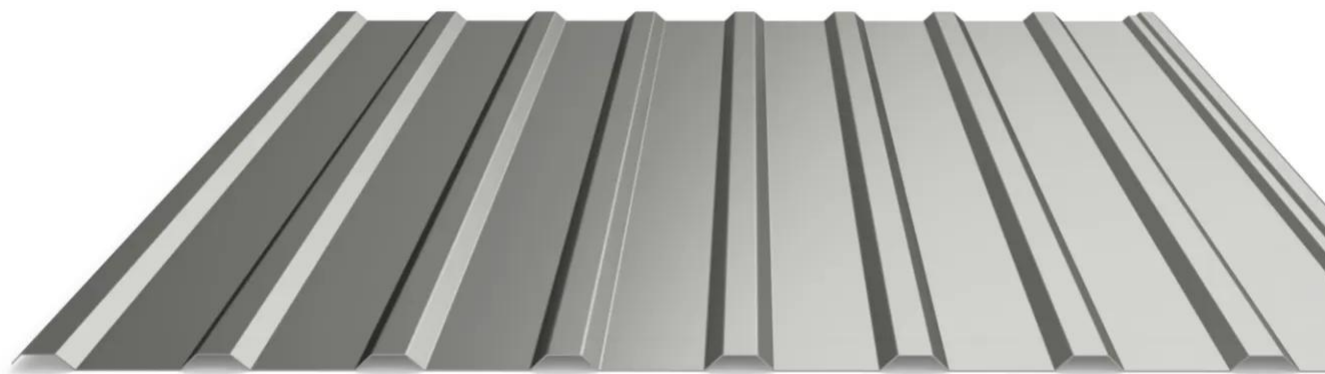
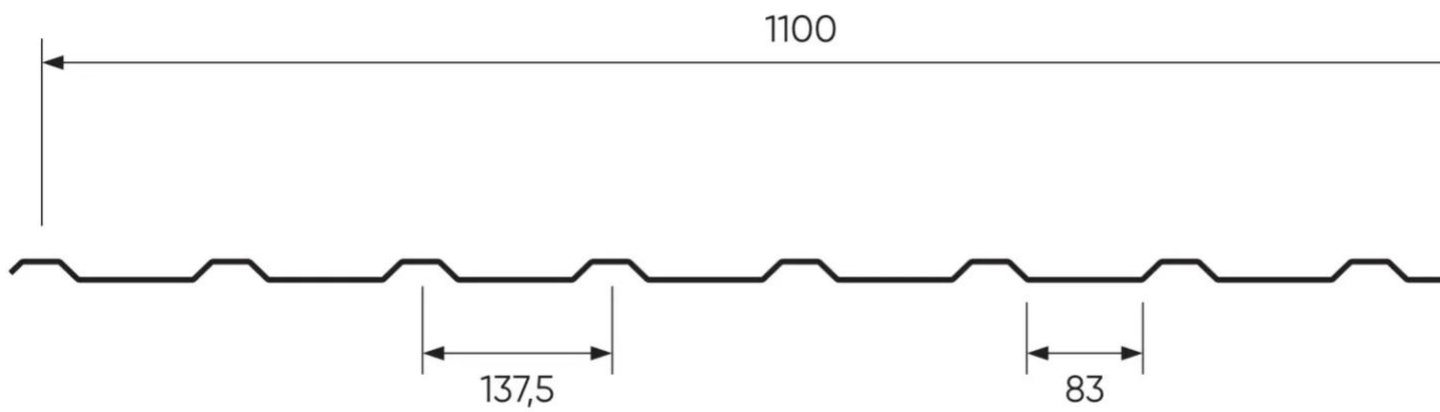
Profile Height: 16 mm

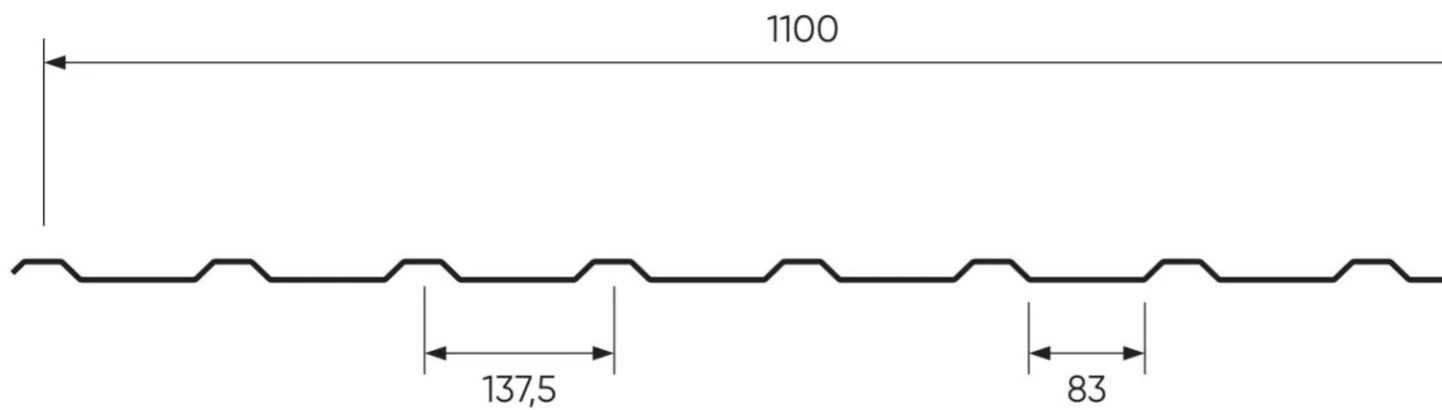
Water Lock: Yes

[Request quotation](#)

[Contact us](#)







Properties

Accessories

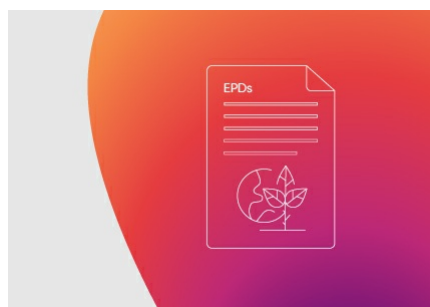
[Request informations](#)

Related products

[Request informations](#)

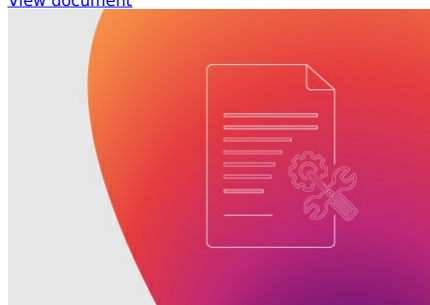
Technical documents

Documents



EPD coated low profiles

[View document](#)



Monteringsanvisning TP

[View document](#)

Technical & commercial documentation



Produktkatalog Sverige

[View document](#)